



Parish Profile

St Matthew's with St Luke's, Oxford

St Matthew's

is a community of
people seeking to
know and love God,
and to grow in this love
and knowledge through
life's experiences.

We value acceptance
and hospitality,
and welcome all.

We believe Christian
faith is relevant to our
daily lives. We seek
to express it in
creative ways and
to encourage
others on their
journey with God.

WELCOME



Contents

1. Introduction from the Bishop & Deanery	4
2. Welcome to St Matthew’s with St Luke’s	6
3. Our new vicar	7
4. Two churches: one parish	8
5. St Matthew’s with St Luke’s mission	16
6. About the parish	18
7. The leadership and staff teams	20
8. A week in the life of the parish	25
Church groups and activities	
Children and youth ministry	
Outreach and community activities	
9. Finance	32
10. The church buildings	33
Appendices	
A. Congregational comments	36
B. Parish statistics	38

1. Introduction from the Bishop & Deanery

From the Bishop of Oxford

The Parish of St Matthew's with St Luke's serves a vital and lively area of the city of Oxford, to the south of the city centre. St Luke's has a long and distinguished ministry to the poor in a pocket of deprivation. St Matthew's has developed a distinctive role within the evolving ecology of the churches in the city as the parish church for south Oxford and meeting the needs of those who appreciate the warmth of community, the open welcome, creative styles of worship and a generous approach to local community support and world mission.

The long ministry of the previous Vicar has been deeply appreciated. A key emphasis in the parish profile is therefore, rightly, continuity. The new incumbent will need to take time to get to know the parish, the city and both congregations well. However in due time fresh vision for mission will be needed as the parish seeks to serve a changing city in a changing world. The new Vicar will need the gifts to enable and lead the development of this fresh vision in due time. This is likely to include a deeper integration between the congregations of St Matthew's and St Luke's, the development of new congregations and a continued emphasis on work with children and young people.

The Diocese of Oxford is currently developing fresh vision around the theme of becoming a more Christ-like Church for the sake of God's world: more contemplative, more compassionate and more courageous. Within the Oxford area we are pioneering new patterns of accompanying enquirers and new believers to baptism and confirmation. A commitment to this renewal of catechesis in this parish and more broadly will be essential alongside a concern to reach out to the whole community in love and service.



The Oxford Deanery

The geographical and sociological area covered by the Oxford Deanery is incredibly diverse, covering the central commercial and retail areas of the city, the world-class University of Oxford, the highly populated suburban areas and the smaller and larger village communities outside Oxford's ring road. There are areas of considerable affluence and poverty, including a homeless community that lives on the streets and in the hostels of the city centre.

The Oxford Deanery is part of the Oxford Archdeaconry and the wider Oxford Diocese, under the Episcopal oversight of the Bishop of Oxford. The Cathedral of the Oxford Diocese is also in the Oxford Deanery. The deanery meets regularly for Chapter and Synod meetings, at which speakers are invited to talk on a range of issues that are of shared concerns to the parishes.

Some of the key features of the Oxford Deanery are as follows:

- We have good links with our neighbouring Cowley Deanery which covers the southern and eastern half of the city.
- There is a full spectrum of churchmanship reflected in the parishes: traditional anglo-catholic, liberal catholic, central, charismatic and conservative evangelical and also shades of different practice expressed in the same benefice/parish.
- Some of the largest congregations of the Oxford Diocese are found in our Deanery. These tend to be (although not exclusively) eclectic congregations with large groups of people coming into the parish to worship
- Parishes/benefices outside the city centre have a church attendance made up of people who are much more likely to live within the parish boundaries, and who are therefore more likely to be involved in the life of their local communities
- More ordination candidates are produced in a year from our many thriving churches' in the deanery than some small dioceses.

We hope that the new incumbent will play a full and active part in the life of the Deanery. You will be most welcome!

Warmly in Christ

Will Donaldson (Rev)

Area Dean, Oxford
Jan 2019

2. Welcome to St Matthew's with St Luke's



Introduction and Welcome to St Matthew's with St Luke's

The two churches of St Matthew's and St Luke's form one parish in the southern part of Oxford that sits within the ring road. The two churches span a breadth of Christian ministry for communities that are socially diverse and involve all the benefits and challenges of 21st century life in this vibrant, historic, changing city.

St Matthew's identifies itself as a community of people seeking to know and love God, and to grow in this love and knowledge through life's experiences. We value acceptance and hospitality and welcome all, seeking to be intergenerational in our approach. We believe Christian faith is relevant to our daily lives. We seek to express it in creative ways and to encourage others on their journey with Christ. The church is involved in the community through a range of activities.

St Luke's mission is to build community in the local area, and to bring spiritual inspiration, emotional support and practical help to those in need. The building is clearly visible from the main road seen by everyone travelling into Oxford from the south.

3. Our new vicar

Who are we looking for?

As a parish, St Matthew's with St Luke's has a sense of excitement about where God is leading us on this next stage of our journey and who will travel there with us. The key things we are praying for in our next Vicar are:

- a leader who is prayerful, servant hearted and compassionate, able to delegate and to motivate others
- a passion for the Bible, able to communicate, teach and inspire others to grow spiritually by showing them how to apply the Bible to modern life
- the discernment to help the churches share the vision and direction that God is calling us to take
- the ability to embrace and grow a culture of acceptance and welcome, allowing people the space to experience God in their own way
- an understanding of the meaning of community and our churches role in it both internally and beyond the walls
- the skill to continue and develop the churches' intergenerational worship
- sympathetic to different styles of worship and expressions of church
- the ability to manage and motivate a staff team and a wide range of volunteer leaders
- someone who will be neither daunted nor unduly attracted by Oxford's universities

In return, St Matthew's with St Luke's will provide an environment in which our Vicar can thrive. He/she will be encouraged to take time for personal reflection and development in order to explore and nurture their own gifts and vision as well as those for the church as a whole. They will be supported in this by a committed team of staff and volunteers across both churches who want to see God's Kingdom flourish throughout the Parish.



4. Two churches: one parish

St Matthew's

(<http://www.stmatthewsoxford.org.uk/>)

St Matthew's is in the centre of Grandpont close to the river and city centre and has an electoral roll of 127 with an average 120 regular worshippers. Of those, about 85 adults plus 30 children, attend most Sundays, and contribute to the rich community of faith in south Oxford. About a third live in the parish. Half of the regular congregation are long-standing members, but there is a substantial turnover of more mobile members.

St Matthew's members recently offered their perspective on what they felt defined the church as well as what they valued from the ministry. They appreciated being given space to be themselves, to discover God's call to them, and to experience His work in them in new ways. There is a lightness of touch in the church, without coercion or stereotyping of people, a freedom to enjoy the diversity of the people God has called to be together with Him. The church has an evangelical heritage (often referred to as 'Open Evangelical') and contains a spirituality which can also embrace the contemplative, the charismatic, and those fired with passion for social action. The level of diversity does not threaten the high degree of unity in the church.

The nature of the Grandpont community, as well as the wider group reached by St Matthew's has been well served by a collaborative and distributed leadership model. We enjoy leaders who inspire and teach but who are not above ministering in the midst, amongst and alongside us. We believe that God's loving presence and grace are experienced in a number of ways: through worship – using the best of old and new; through the preaching of the Word – our sermons are always Bible based (thematic and expository); through the sacraments – we celebrate communion informally but reverently; through the visual as well as the verbal – we often use images and video; and also through every member of the church. We seek to be genuinely intergenerational, so we are as likely to have children and young people in the centre as we are to have adults. There is a strong tradition of placing high value on the presence, insights and talents of the young, expressed for example in our policies of welcoming baptised children to communion before confirmation, and in our having a paid Families' Worker, Youth Worker and Children's Worker on our staff team. We have a number of ordained clergy in the congregation, both male and female, who are active in leading, preaching and celebrating communion.



This word cloud was generated at the congregational meeting of 10 th November 2018 in answer to the question "Who are we as a church?"

St Luke's

(<http://www.stlukesoxford.org.uk/>)

St Luke's is situated on the edge of Oxford just within the ring road in a rather overlooked part of South Oxford called Cold Harbour. There is considerable deprivation and social need in the neighbourhood closest to the church.

St Luke's has always sought to address those needs, our mission statement being:

'St Luke's exists to build community in the local area, and to bring spiritual inspiration, emotional support and practical help to those in need.'

This is reflected in our worship and all the other groups and activities throughout the week.

Our Sunday services aim to be as accessible as possible to those of no church background or faith, and inclusive to all ages and people who come. We celebrate diversity, and our ministry is often to give a voice to the voiceless, and to bring the vulnerable and marginalised right into the heart of the love of Christ, and into the centre of our church community.

Services are informal and friendly, usually providing interactive opportunities, so everyone can feel involved if they wish to be. There are usually 20-25 people on Sunday mornings, with a children's group in a side room. We often find that children from the locality join us, as well as children of church families. We use a variety of styles of liturgy, often with a Celtic feel. We often use songs written by members of the congregation or use the visual arts to help open the Bible to people. We have a variety of people involved in leading and preaching

on a Sunday, so it isn't always a member of the clergy.

We have a strong sense of social justice, and often feel we are ministering 'at the coal face'. One of our members recently described being at St Luke's as 'an apprenticeship for life'. We aim to come just as we are, aware of the real down to earth issues facing us, and not dressed in our Sunday best. We welcome the difficult questions about life and faith, and try to tackle them together.

Our values are expressed well in the "Manifesto" which was developed over the period of our building transformation:

St Luke's is a community of people from all walks of life who are drawn together because of Jesus. Community is at our heart.

- Providing a safe and relaxing place where everyone matters
- Looking for practical ways to care for one another, our neighbourhood and our world
- Working for peace and reconciliation, and challenging injustice where we see it
- Celebrating joyful occasions
- Expressing our faith in a way that does not hide from life's difficulties
- Sharing food, fun, creativity and the arts
- Looking for the transforming power of the Holy Spirit in our lives

Bishop Steven at St Luke's

Worship and prayer at St Matthew's

Sunday morning

8:00am – Holy Communion using the Book of Common Prayer. This is usually a very small group of people (2 – 8 adults).

10:30am – This service is family-friendly and fairly informal – loosely based on Common Worship. The congregation spans the age spectrum and is between 70 and 90 adults plus 20 to 30 children. There is a mix of contemporary songs and traditional hymns led by a music group comprising a mix of singers, keyboards, guitars, drums and other instruments. The children are present for the start of the service and a short talk before they and the young people continue worship in their respective groups. Holy communion is celebrated twice a month with the children and young people re-joining at the end of the service. After the service we have refreshments and there is a healthy buzz in the church as people meet and catch up with one another. A small team offers prayer ministry in the chancel area at this time.

In the 10:30 services we do not follow the Lectionary but have a series following a theme or a book of the Bible. For example, we do not necessarily have a formal sermon. We occasionally have 'sofa sermons' taking the form of a panel discussion and 'zone services', where after a short reflection people break into groups to explore the theme further – through discussion, prayer, creative activity and silence for example.

Thursday Communion

Holy Communion using the Book of Common Prayer is held in the church vestry (8 – 14 adults attend). It is hugely valued by some older members of the congregation for whom it is their church.

Monday silence at St Matthew's

An opportunity to share silent Christian meditation together. It is simple and completely informal, though it draws on an ancient Christian tradition. The format includes a chat, listening to some Christian music, a Bible passage and some thoughts on Christian meditation followed by half-an-hour's silent prayer together. This is lay-led.

Tuesday prayer meeting

An evening group devoted to prayer for all aspects of the church life, the community and the wider world. This prayer meeting provides an opportunity to remember those with specific needs.





Worship and prayer at St Luke's

Sunday morning service

St Luke's meets at 11:00 for intergenerational Anglican worship in a relaxed style, often with a Celtic element. About once a month this includes Communion, open to Christians from other denominations and baptised children of any age (in line with the Parish policy on children and communion).

Morning prayers

St Luke's is open for half an hour on Monday, Wednesday and Friday at 8:45 for Taizé-style prayer.





5. St Matthew's with St Luke's mission



Mission: *To continue to build even stronger links with local residents, demonstrate Christ's love through direct support to those in need within our parish (e.g. through involvement in the Oxford Winter Night Shelter initiative, our links with Christians Against Poverty etc.) and to provide ever-easier routes into church life. To continue to support those actively engaged in mission, be it overseas or more locally.*

To focus on growth (numerically as well as spiritually) and to consider a range of opportunities.

Children and Youth Ministry

Children are central to the life of both churches. St Matthew's was awarded the Diocesan Child and Youth Friendly Church Welcome Award in 2017. St Luke's, too, gives children and young people key roles in all areas of church life.

Mission: *To build on the award received, to encourage even greater youth and child participation across the community working with the children and youth staff team. To maintain and develop the strong links with St Ebbe's School. To continue to resource mid-week and Sunday groups for children and young people across both churches.*



Looking forward, the priorities for the combined churches fall under a range of headings:

Mission, church growth, evangelism and social action

These are central to our vision of God's purpose. We hope to look beyond our immediate neighbourhoods to strengthen the body of Christ and make Jesus known through presence, word and action – in Oxford as well as further afield.

Older people

A significant proportion of the local community are older people. At St Luke's our Friday drop-in is an important means of support for older people, alongside the Salvation Army lunch club. Home visits are a crucial part of our ministry to older people.

Mission: *To engage this important group of people and ensure that we are a truly intergenerational church body. We will*

provide support where it is needed and ensure that older people's specific needs, views and expertise are more actively sought and acted upon.

Discipleship and worship

The styles of worship at St Matthew's and St Luke's churches are particular to each congregation. Both have eclectic all-age congregations reflecting many different traditions.

Mission: *To maintain the fundamental characteristics of informal worship and Bible-based teaching at St Matthew's and St Luke's whilst not being afraid to experiment with new forms. To develop new opportunities for small group discussion, prayer and support which will further build community within the life of the churches and to develop new opportunities for people to ask honest questions about faith.*

Pastoral care

We take seriously the importance of welcoming people and offering care and support for those who are experiencing difficult times. At St Luke's this can often mean working alongside social workers or secular support organisations.

Mission: *To ensure that the church continues to provide the necessary help through existing support structures (such as home groups) and through the pastoral care team. To support people in the community with complex issues requires an understanding of support services outside of the church especially when it might be right to refer a person for specialist help.*

Buildings

St Matthew's and St Luke's both have well maintained buildings and good functional meeting spaces. Both have small gardens attached.

Mission: *To make optimum use of the buildings both internally and externally. To continue the reordering of St Matthew's frontage making it more open, visually welcoming and accessible. Hiring out the space provides an opportunity to serve the local community in the best possible way, compatible with our faith basis.*

Environmental sustainability

St Matthew's and St Luke's parish takes seriously the fifth mark of Mission to safeguard the integrity of creation and sustain and renew the life of the earth.

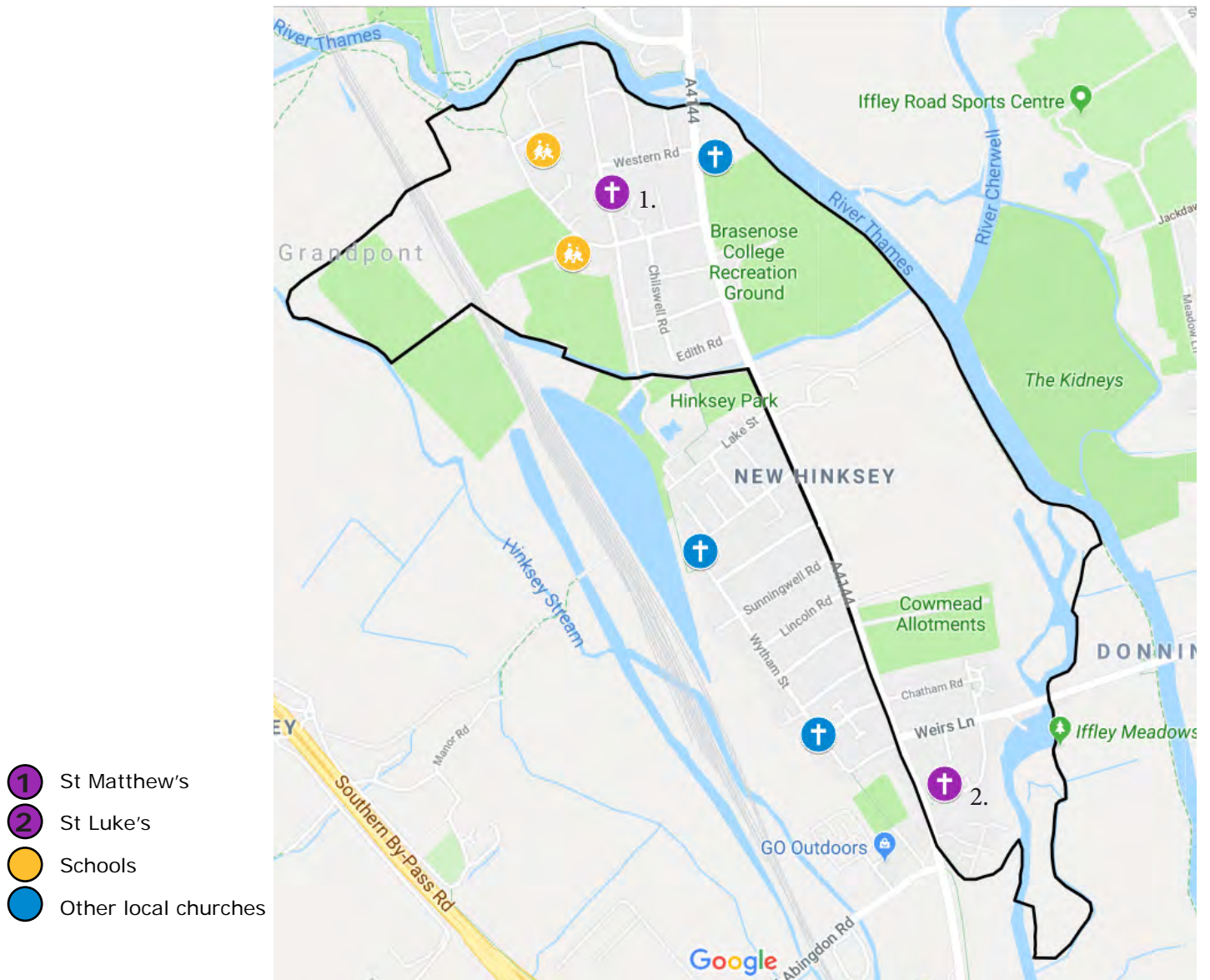
Mission: *To continue to seek new ways of ensuring that the two churches take a lead in our stewardship of God's creation by promoting best practices and investing for the future. This is probably an area that we all need to work on!*

Discerning the vision

St Matthew's with St Luke's is involved in a wide array of activities supported by people with busy lives both inside and outside the church.

Mission: *To continue to create the space to pray, listen and be refreshed. To provide opportunities to think about where we are going, and to set and communicate priorities. To recognise where we need to stop doing things to make way for new ideas and where we need to step out and take risks*

6. About the Parish



A walk around the parish

It takes no more than half an hour to walk from one end of the parish to the other. The parish is just over a mile long, has an area of 0.4 sq miles and had 3,154 residents at the time of the 2011 census.

From Folly Bridge, head south down the Abingdon Road, past Salter's Steamers (and the site of its original boatyards to the right). Holy Rood Catholic Church is set back from the road to the left, a modern building surrounded by trees. College playing fields,

overlooked by some rather grand council properties, continue all the way along the eastern boundary and are punctuated by the Oxford Spires Hotel, and council allotments. Just beyond Tesco Express is St Luke's, marking the southernmost point of the parish.

Crossing the Abingdon Road and turning back north into St John's Parish you will find the Buddhist Vihara house and the old South Oxford Baptist Church, currently the home of the Oxford Salvation Army and a South Asian congregation. The various

businesses operating on this side of the road, or just off it, include Nisa (with the only Post Office left on this side of town), A&C Glass, Isis Creative Framing, the Mediterranean Fish Bar, as well as two pubs and several B&Bs. Vicarage Road leads to St John's Church and New Hinksey School. Just past it are the popular Portuguese Café and Bleep Chemists. At the end of Lake Street are the South Oxford Community Centre, Lake Street Nursery and South Oxford Health Centre, by the back entrance to Hinksey Park with its heated outdoor swimming pool. Along the Abingdon Road are more B&Bs, a selection of corner shops and nearer to St Matthew's, a hairdresser, a Turkish barber, the White House pub, and a car mechanic garage.

The streets of Grandpont, forming their grid of Victorian/Edwardian terraces, lead us back to St Matthew's and just beyond it the Ethos Hotel, with its café opposite. In this part of Grandpont there is some student accommodation and around the corner is Pegasus Grange – a development of 91 retirement apartments where the residents have strong links to the church.

Nearby are Grandpont Nursery (<https://www.grandpontnurseryschool.co.uk>) with provision for around seventy 3 – 4 year olds, the Family Room with facilities for various support groups, and the unique South Oxford Adventure Playground (SOAP). St Ebbe's CE primary school (<https://st-ebbes.oxon.sch.uk/>) at the end of White House Road, also has strong links to St Matthew's. On either side of the school are Riverside Court and Salter Close providing council accommodation for elderly and/or vulnerable people. Near the park on Abingdon Road is a probation hostel.

Neighbouring parishes:

To the south and west of St Matthew's parish is the church of St John the Evangelist, New Hinksey, part of the Parish of South Oxford with New Hinksey. St John's stands in the Catholic tradition of the Church of England, with episcopal oversight from the Bishop of Ebbsfleet. From time to time members of St Matthew's have joined St John's for services, with St Matthew's music group providing music for the event.

Immediately to the north of the parish is Oxford St Ebbe's, a large evangelical church which shares the governance of St Ebbe's Primary School with St Matthew's.

To the north and east of the parish lies Oxford St Aldates, a large city centre church and the one from which St Matthew's derives its roots. St Matthew's and St Luke's now have their own distinct styles but still receive support – through the St Aldate's Parochial Charity.

7. The leadership and staff team

What support is in place?

The vicar is supported by a strong team of ordained and lay people.

The Revd Jane Lees has led St Luke's church for 26 years and the Revd Mike Rayner has been an Associate Minister with St Matthew's since 2007. The Revd Stephen Tuck joined as Curate two years ago. Mike and Stephen both have full time employment outside the church and Jane part time.

The paid staff include administrative support for the two churches. There is also a youth worker and a children and families worker covering both churches, managed by the Families and Pastoral care worker, herself an experienced youth leader and trainer employed for one and half days per week.

The congregation also includes three ordained clergy who have been providing support during the Vacancy.

Meet the team

1. The Revd Mike Rayner
Associate Vicar
Self-supporting
St Matthew's
2. The Revd Jane Lees
Self-supporting minister and paid community worker
St Luke's
3. The Revd Stephen Tuck
Curate (2nd year)
Self-supporting
St Luke's
4. Jo Hutchence
Families and pastoral care worker
St Matthew's

5. Kate Smith
Children's and families worker
St Matthew's and St Luke's
6. Naomi Shaw
Youth and community worker
St Matthew's and St Luke's
7. Rosemary Kitto
Office manager and administrative assistant
St Matthew's
8. Siegi Dethune
Administrator
St Luke's
9. Sarah Hearne
Cleaner
St Matthew's and St Luke's

The churches employ a contract bookkeeper, Denise Moles, for approximately a day a week and a crèche worker, Donna McCullough, for the Coffee and Cake sessions (see next section).

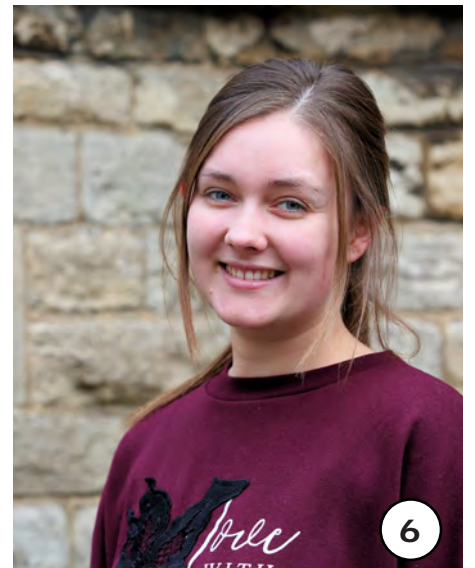
St Matthew's is fortunate to have ordained and lay ministers in the congregation:

The Revd Janet Taft
Working alongside Mike Rayner to ensure clergy activities are covered during the Vacancy.

The Revd Mike Moynagh
Part of Services Committee and supporting those exploring faith.

Yvonne Morris
Lay minister supporting Children and Family Ministry.

Jane Usher
Lay Minister.



Organisation

During the Vacancy the church is led by the churchwardens:

1. Andrew Smith
Warden (based at St Luke's)
2. Chris Taft
Warden (based at St Matthew's)
3. Tim Goodacre
Deputy Warden (based at St Matthew's)
4. Catherine Ham
Deputy Warden (based at St Luke's)
5. Nicky Rayner
Treasurer and designated safe-guarding lead.

The PCC meets four times a year and is split into two DCCs, one for each church, which meet in the intervening months. For St Matthew's the church is managed through a series of committees which each have very capable leadership reporting back to its DCC.

Both churches are blessed with a strong core of volunteers who undertake a wide range of responsibilities including leadership of home groups, worship, children and young people, as well as those involved with pastoral care.





8. A week in the life of the parish

In the parish of St Matthew's with St Luke's we try to be hospitable to whoever comes to us, however long they stay. We want people to feel at home with us whether or not they have a committed faith. The churches have a wide variety of activities during the week including a full Youth and Children's programme and a range of fellowship and home groups. Both churches take every opportunity to be open to the community both for planned events and by hiring out the facilities.

The following pages give a brief description of the key activities from a typical week in the life of the church.



Church groups and activities

St Matthew's

Home groups: These meet at different locations around the city – some weekly, some fortnightly, some monthly – on different days of the week. They aim to provide friendship and support in a Christian context.

Music group: This leads worship in a variety of styles on Sunday mornings and at other times. Practice takes place before each service on a Sunday morning.

Women's and men's breakfasts: These take place several times a year and are an opportunity to worship, pray and support one another in a friendly, relaxed environment.

Parenting for faith: A course resourcing care givers in their spiritual nurturing at home. This is a six session course – meeting approximately monthly. We aim to grow this group beyond the end of the material. We have about 14 families who have attended over the time.

St Luke's

Midweek home group: One of the St Luke's families often has open house on a mid-week evening which draws in people of all ages for a simple supper followed by Bible study and prayers, usually to introduce the theme of the Sunday sermon series. Effectively this is a community of neighbours exploring together what it means to be a Christian today.



Children and youth ministry

St Matthew's

During Sunday Services

Crèche: For 0 – 4 year olds, currently about five children. Parents are free to stay with their children or go back into the service – mostly, the time in crèche is just free play for the children, sometimes with a story and simple craft activity.

Fireflies: For 5 – 7s, currently about 20 children. The session usually involves a game, a Bible story and a chance to talk about what the story means, a drink and a biscuit and a craft activity.

Lanterns: For 8 – 11s, currently about 15 children. The session usually involves a game, a Bible story and a chance to discuss the story together, a drink and biscuit and a range of activities.

Ignite: This discipleship group of about 15 young people meets on Sunday mornings at St Matthew's. It is a place for young people to explore their Christian faith that has an emphasis on what it is like to live out that faith during the week.

Midweek

Jam and Juice: For 0 – 4s, every Tuesday from 10:00am – 11:30am. Currently attended by about 20 families (children and their parents or carers). Drinks and snacks are served throughout. We have an optional story time and finish the group by singing together before we say goodbye.

Powerhouse: For 5 – 11s, every Wednesday from 5:30pm – 7:00pm, about 20 children currently come along. A varied range of activities in different rooms including a craft room, a games and Lego room and a sports room. For the first hour the children are free to do whatever they choose, followed by a tuck shop and a big group game. There are also special themed sessions.

Court Hill residential: This is an annual residential when about 20 – 25 children and young people at St Matthew's stay over. A chance to build relationships among the young people and youth leaders and to explore faith through a weekend theme.



St Luke's

Sunday evenings at St Luke's: This discipleship group grew out of the Lee Abbey youth camp (see below). About eight young people attending but currently taking a break. Equipping young Christians with basics such as prayer and Bible study skills. Again with an emphasis on what it looks like to live out faith in our everyday lives.

Babymania: For 0 – 4s and their parents/carers. About 15 families attend. Food is available throughout the session for those who need it. We have singing together before a simple lunch.

Monday club: For 5 – 8s, two to five children attend. A chance to look at a Bible story together and discuss it with the children. Also to do cooking, optional craft games and snack time.

Monday Plus: For 9 – 12s, four to ten children attend. Lots of activities including cooking, craft, games, air hockey, pool, table tennis and football. Starts with a five-minute 'God Slot' where we look at a Christian topic with the children.

Find Your Fire: An alternative education project which supports and encourages young people from St Gregory's and Oxford Spires Academy who have been identified as vulnerable. Combining outdoor activity away days, informal education and an accredited award (equivalent to half a GCSE). About 15 young people are initially asked to participate for a year with some returning in a youth leadership capacity.

YouthSpace: A drop-in youth club for young people aged 12 – 18. Young people from around St Luke's and the Donnington Bridge area. Cooking, sports, games and space to chill out are all aspects of building relationships with young people in our area. (20 young people on the books, in an average week, 6 – 12 young people attend.)

Lee Abbey youth camp: A week-long youth camp that children from St Luke's have attended for several years. A Christian camp but many of the young people who have attended from St Luke's are not Christians and it is often their first exposure to Christian community. (5 – 10 young people attend from St Luke's.)



Outreach and community activities

St Matthew's

St Ebbe's school: Working in partnership with St Ebbe's church, St Matthew's has close links with the school and the PCC is consulted about changes in governance, e.g. the recent change to academy status. St Matthew's takes a school assembly once a month and hosts the annual Harvest, Christmas and Easter services in the church. This link is valued by the school and the church, with the Vicar of St Matthew's providing pastoral care at crucial times as well as acting as a governor.

BeSpace: Working in partnership with St Ebbe's primary school, once a year for a week, we offer a space for reflection and prayer for children of all faiths and none. This is a partnership between the charity BeSpace and adult volunteers from St Matthew's church.

Coffee and cake: a small highly supportive group of parents who meet to chat, study the Bible and pray with and for each other. A crèche worker looks after the children.

Oxford Winter Night Shelter (OWNS): is a new initiative where St Matthew's will be accommodating ten people each Sunday night from 6th January to the end of March as part of the Oxford Winter Night Shelter. This is part of a scheme in which ten local churches to offer 20 beds each night to homeless people at the coldest time of year.

Drop-in lunch: Open for anyone needing a meal and some company. About 30 people attend every Thursday.

Oxford Churches Debt Centre: One of the local Christian activities that our church supports is OCDC (<https://oxfordchurchesdebtcentre.com>). Although legally a separate entity, this operates as

a branch of the national charity, Christians Against Poverty. Nine local churches provide support, and St Matthew's Vicar (as one of the founding churches) has been a trustee on its management committee.

Interest-free loans: A scheme to help those who have a short-term need for something important, can demonstrate an ability to repay, and are unable to borrow from another source without incurring unnecessary risk.

Mission support: 10% of income each year is directed to mission activities. The aim is to make a difference in the world by engaging with a range of social, environmental, economic and global issues whether overseas, in the UK or here in Oxford. We currently support the Church Mission Society, Semiliki Trust, Faith in Government, Latin Link, Oxford Churches Debt Centre, Viva Network, Friends International and Street Pastors.

'66 Men of Grandpont': A community project – led by a local historian – to research the lives of the 66 men named on the First World War Remembrance plaque in St Matthew's. This led to the production of an award-winning film, an exhibition and various other events during the First World War centenary.

Room hire

St Matthew's hosts a range of activities in the parish centre including ballet classes, Bilingua Babies, a maths class and a Tango class.

Outreach and community activities

St Luke's

Confluence Cafè: A monthly coming together at St Luke's of people from different parts of the world to share music, dance, poetry and food from their own traditions. It provides a platform for people from marginalised communities such as refugees, the homeless and vulnerable and for the rest of us to learn. The one thing we have in common is that we have made our home in Oxford.

St Luke's creative workshops: For the past few years since the reopening of the new building (2013), an open group of mixed ability adults has been meeting to explore different creative themes and techniques. This 'play group for grown-ups' brings together people of all ages from the wider community in a safe space where people can share what's important to them.

St Luke's drop-in: Every Friday morning from 10:00 – 12:00 noon the Chill-out space at St Luke's is open to a small group of people from the immediate neighbourhood for coffee, biscuits and chat.

Room hire

St Luke's is available to hire for activities which are compatible with our status as a church. This provides an affordable venue to local families for birthday parties etc. and creates an income which helps to make us sustainable.

Some of the groups that hire space in our buildings:

Narcotics Anonymous: St Luke's is proud to provide a weekly venue for this 12-step group.

Hungarian Church: A congregation of Hungarian speakers, mostly from Romania, comes together every Sunday afternoon and midweek for Bible study and a toddler group. Occasionally we combine, e.g. for the annual carol service.

Life in Christ: A youth Bible study connected to a local Asian congregation that meets at St Luke's.





9. Finance

Finance

St Matthew's with St Luke's has a generous church family, which is particularly responsive to appeals for specific funding. St Luke's, historically and currently, attracts grant funding for various social action projects, whilst both churches, particularly St Matthew's, have been blessed with a solid base of stewardship giving. Our '125 appeal' (the parish's 125th birthday was in 2016) raised funds for a number of initiatives, including expanding our half-time youth worker role to a full-time position for the three years to the end of 2019. We plan a further appeal to continue this work into 2020 and a stewardship campaign to ensure the long-term sustainability of our valued staff team. We have healthy reserves and valued involvement in the Bridge Builder Trust, an independent local charitable trust established by a previous incumbent, which has historically supported fund raising for substantial community building works at both St Matthew's and St Luke's (see below). The running costs of our church buildings are substantially offset by lettings income, including from the St Matthew's parish centre flat.

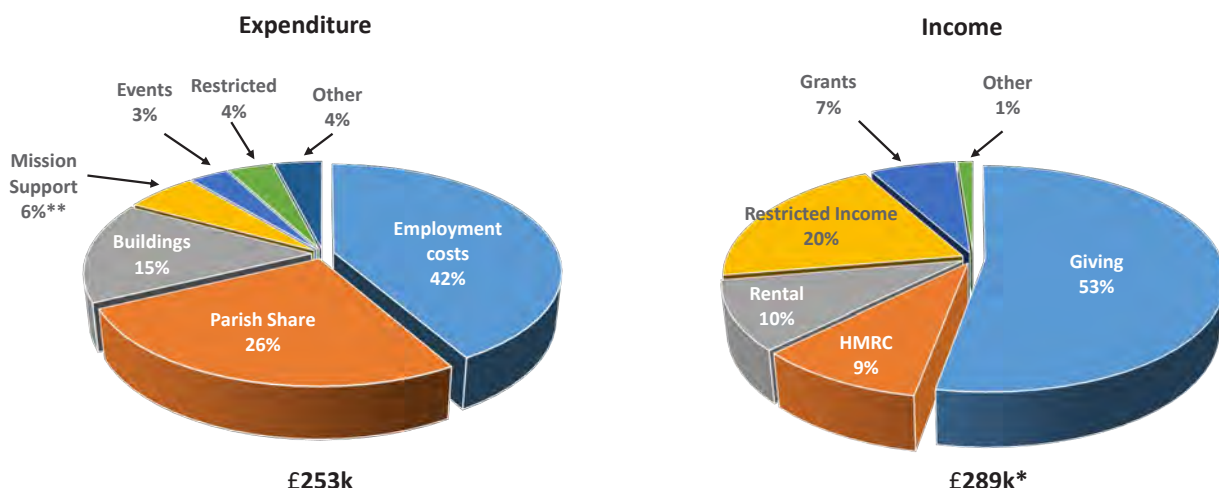
Our most significant spend is on the salaries of our staff team. In addition to one-off appeals and fundraising for specific Christian projects, we give a tenth of our annual unrestricted stewardship income to local and international mission support.

Full accounts are on our website, but the main areas of our income and expenditure are as shown below in the two pie charts.

Bridge Builder Trust

The Bridge Builder Trust is our very own community development trust, set up in the wake of the Parish Centre building project in 1996. Over the years it has been a source of funding for many small-scale projects within the parish or connected with it – from thermal curtains at the Hogacre Common Eco Park to medical training in Egypt. It has also provided a convenient financial vehicle for larger schemes such as the 125 Appeal and the St Luke's Big Project. Its very name celebrates the fact that the church can be a resource for building bridges to its neighbours...and further afield.

St Matthew's with St Luke's finances 2018



* Income exceeds expenditure due to restricted income which will cover 2019 costs

* Mission is 10% of total giving. Restricted funds are largely from the 125 Appeal from which 10% was given when raised.

10. The church buildings

Vicarage

A modern, attractive, purpose-built vicarage was constructed next door to St Matthew's church in 1994 (in exchange for land on which the old church hall stood) at the same time as the Parish Centre was opened. It is a short walk to Oxford city centre and easily accessible to bus routes in and out of the city. It has a large master bedroom with en suite bathroom, three further bedrooms, main bathroom, shower room, kitchen diner, cloakroom, downstairs and upstairs living rooms. A ground-floor study has its own entrance. The property has a good-sized attractive garden, a garage and off-street parking for one car (much sought after in this part of Oxford).





St Matthew's

The church was consecrated in 1890. It is a substantial well-maintained Victorian stone building which can seat 350 people. On entering St Matthew's for the first time, visitors often comment on what a light and open space it is. It is low maintenance with major investments over the last 25 years having been made to make better use of the space. The church was completely refurbished in 1994 when the adjacent Parish centre was constructed to provide a new hall, an office, meeting rooms, kitchen

and toilets, all with disabled access. A flat provides rental income. A small garden borders the building. There is no graveyard. A project to build more disabled parking spaces and open up the frontage has been planned and we are in the process of obtaining quotes from builders.

St Luke's

In 1933 the area of South Oxford known as Coldharbour, which had been newly developed as a mini council estate, was given a church of its own for the first time: a wooden kit costing £1,000 that looked a bit like a Scout hut. It served well over many years both as a church and a place of meeting and was greatly loved. On Easter Eve 1990 it was nearly burnt down after a fire in a garden shed spread to the church. Although still well used at the beginning of this century, it was clear that this building was no longer fit for purpose – cold in the winter, too hot in the summer and with only a single small room for meetings.

After a long process of community consultation, fundraising and negotiation with the city council (from whom we rent the land), it was decided that it would be possible to strip the original building, remove the asbestos panelling and roof tiles and create a small extension, which became known as the Chill-out Space. Over a nine-year period the St Luke's Big Project (led by the enthusiasm of our young people, who managed to unlock over £50,000 of public money) provided us with a stylish, modern building that provides hope and vision to the neighbourhood. The retention of some original features and the art work inside it gives the new building character. It is clearly a place of worship as well as being a much used place of meeting. Because of what it is, the way it looks, and what it contains it speaks for us.



Appendix A

Congregational comments

These charts summarise the outcomes of a recent Saturday morning meeting set up specifically to think and pray about our key priorities and hopes as two churches in Grandpont.

Things we are thankful for

- *Our services - teaching & worship*
- *Our all age approach*
- *Prayer, support, healing and friendship*
- *A deep sense of belonging and open inclusivity*
- *Feedback from younger children - they value activities, fun, friends. They feel safe, valued and included.*
- *Our commitment to local community and local/wider social action.*
- *We are solvent.*

Who are we as a church?

- *Accepting of all views and people*
- *Authentic people able to be themselves*
- *Faithful to the Bible but let it speak for itself*
- *Loving / caring to each other and those around us*
- *Intergenerational*
- *Nurturing children and adults in their walk with God*
- *Recognises its role in the community*
- *A praying church*

Where are we as a church?

- *We look after one another within the framework of many established adult and children's groups*
- *We have a wide range of outreach and mission activities, local, national and international*
- *Want to support/nurture children's work, elderly, home groups, people in their daily lives, new initiatives, fresh expressions of church*

Our priorities are: to retain the distinctive flavours of St Matthew's and St Luke's; to follow Christ more closely; to be even more open to all who want to come in; to reach out more effectively into the community.

Areas that challenge us

- *Serving even more in the community*
- *Converting activities into making disciples*
- *Communicating internally and externally*
- *Fresh expressions of church*
- *Busy lives and finding stillness*

Where do we want to be - in our church life together?

- *Wanting to be challenged*
- *Continuing to build on the intergenerational foundations*
- *Developing fellowship groups*
- *Time to pray, listen and be refreshed*
- *Retain distinct nature*

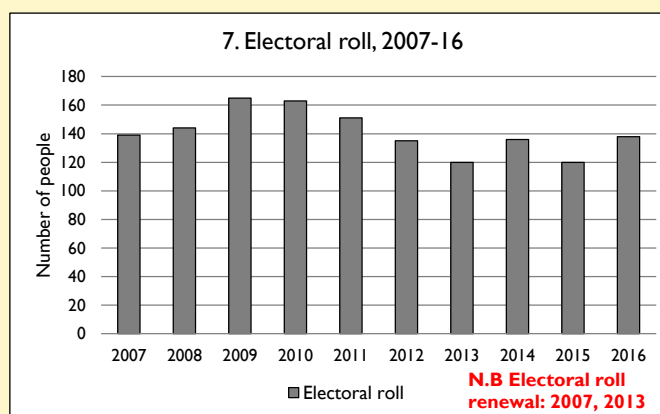
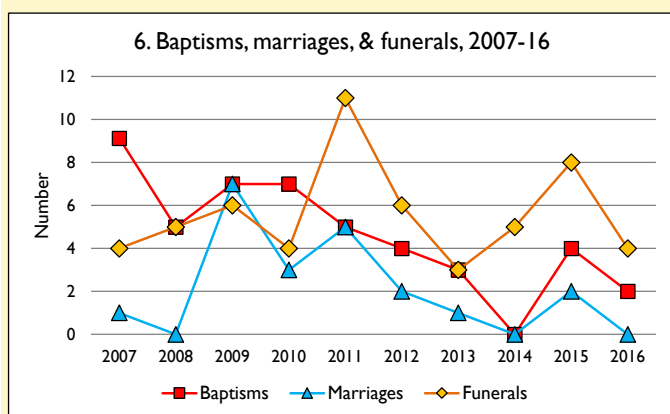
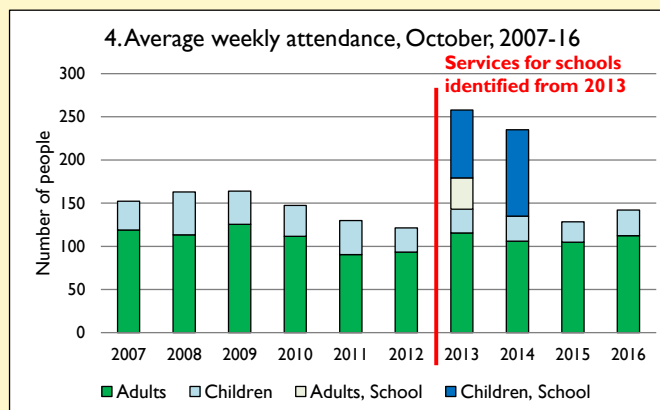
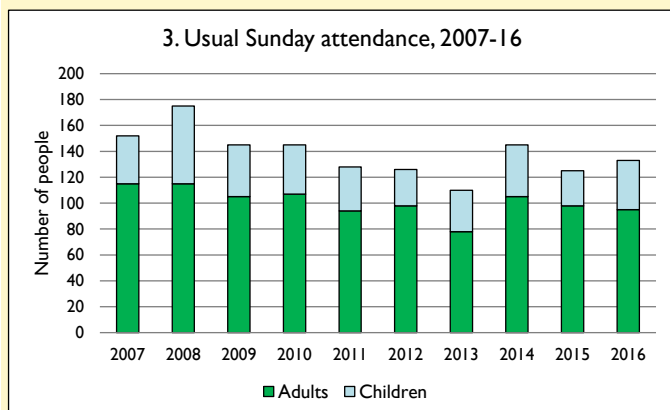
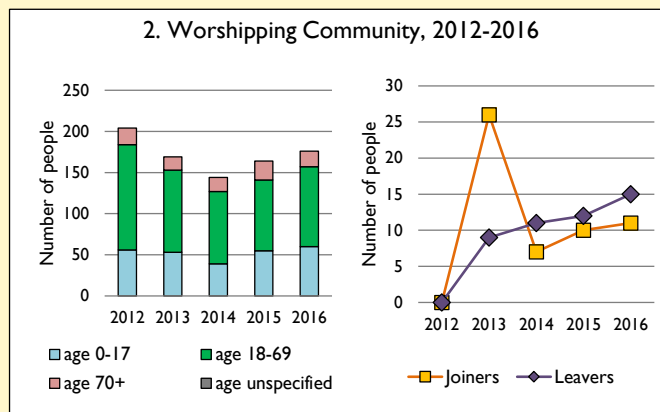
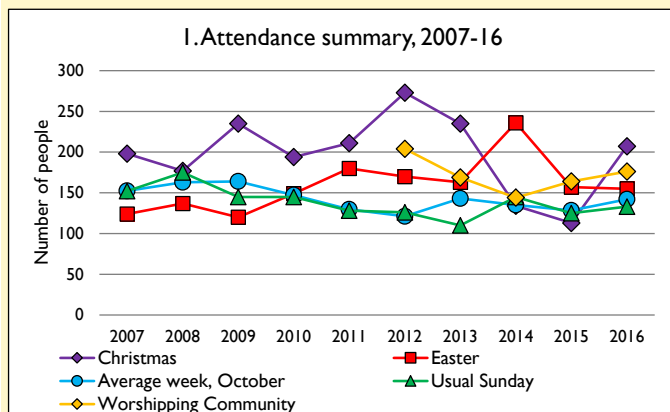
Where do we want to be - looking forward?

- *Be prepared to change and take risks*
- *More opportunities to think about where we are going and set priorities*
- *Be prepared to stop doing things*
- *Communicate more effectively*
- *Continue to support current and new Outreach activities (CAP, Night Shelter, etc..)*
- *Look at new ways of reaching out to the community*
- *More opportunities to bring people into the church for social and Christian events*

Appendix B

Parish statistics

Dashboard for the parish of Oxford: St Matthew in the Deanery of OXFORD



Variations in attendance from year to year may be the result of changes in the number of churches that submitted returns, or changes in parish/benefice structure.

Number of churches included in returns: 2007 2; 2008 1; 2009 2; 2010 2; 2011 2; 2012 2; 2013 2; 2014 2; 2015 2; 2016 2.

Produced by the Research and Statistics Unit, Church House, Great Smith Street, London SW1P 3AZ. Date of production: 9/10/17

Every effort has been made to ensure that data are reliable. We would be grateful to be notified of any significant errors or omissions by email to statistics.unit@churchofengland.org

Parish census and deprivation summary

Parish population (2011): 3154

	Parish	Diocese	National
% aged 0-17	16%	23%	21%
% aged 18-44	54%	37%	37%
% aged 45-64	19%	25%	25%
% aged 65 & over	11%	15%	16%
% Christian	42%	58%	59%
% non-Christian religion	9%	9%	9%

Parish deprivation rank (IMD, 2015): 4645

(1=most deprived parish in the Church of England, 12,554=least deprived)

For more detailed census & deprivation info: see <http://arcg.is/1RaS4CS>

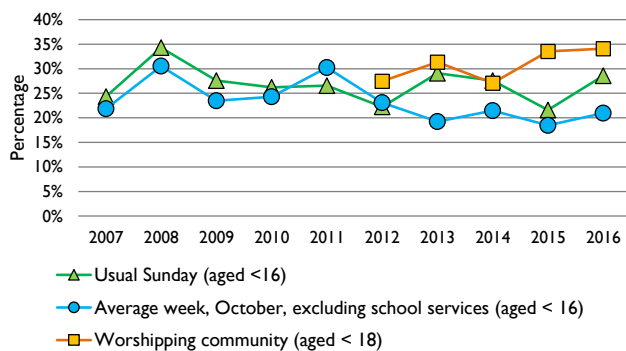
<https://www.churchofengland.org/about-us/facts-stats/research-statistics.aspx>

and <http://www2.cuf.org.uk/poverty-england/poverty-map>

Number of churches in parish (2016): 2

Parish code: 270224

5. Percentage children, 2007-16



This dashboard contains figures as submitted by churches currently in the parish

Attendance statistics: taken from annual Statistics for Mission returns.

Average weekly attendance: attendance at Sunday and midweek church services & fresh expressions in October; Figs 1 & 5 do not include attendance at services for schools.

Easter: Easter Eve & Easter Day; Christmas: Christmas Eve & Christmas Day.

Baptisms: all baptisms & thanksgivings.

Marriages: marriages and services of prayer & dedication after civil marriages.

Funerals: those held in church & at crematoria/cemeteries.

Worshipping Community information has been collected from 2012 onwards.

Census data: taken from the 2011 national Census.

Deprivation statistics: IMD taken from the English Indices of Deprivation, published by the Department for Communities & Local Government, Sept 2015.

The above statistics have been mapped onto parish boundaries so are approximations.

For more information, see:

<https://www.churchofengland.org/about-us/facts-stats/research-statistics.aspx>



Follow us on Twitter:
@cofestats

 **THE CHURCH
OF ENGLAND**
Research and Statistics



LORD TEACH US TO PRAY