

St Matthew's Church

Vision for the Parish Centre

18th May 2025



Today

- Our 3 Challenges and 3 Steps for the project
- Feedback from our earlier consultation with users
- Energy, heating and lighting
- The needs of users of the building – Katharine, Office Manager
- Refresh possibilities – Steve Wolstenholme, Architect
- Questions from the floor (finish at 1245)
- See the plans and talk to the team

3 Challenges - Reminder

1. After 30 years of hard use, the building is looking tired.
2. The needs of church and wider community have changed.
3. The building is heated by an old, gas-fired boiler which will need replacing.



It is time to 'Refresh' the Parish Centre and reduce the carbon footprint

3 Steps

- Stage 1 – Base data and drawings – DONE
 - Architect stage 1 drawings ready for discussion.
 - Engineers have provided ideas to improve energy efficiency.
- Stage 2 – Select ideas we want to progress - NOW
 - We have a menu of options – “building blocks”
 - Now need to decide exactly what we want to do
- Stage 3 – Go out to tender, get approvals, raise funds

Some ideas given in consultations

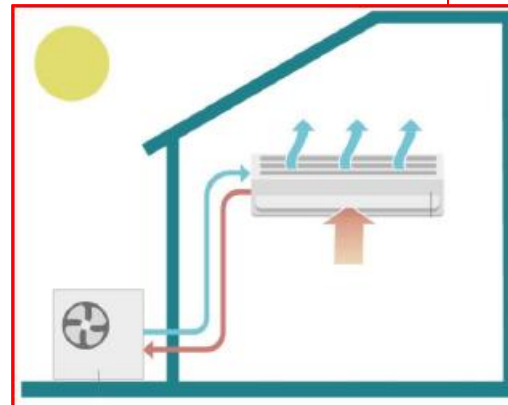
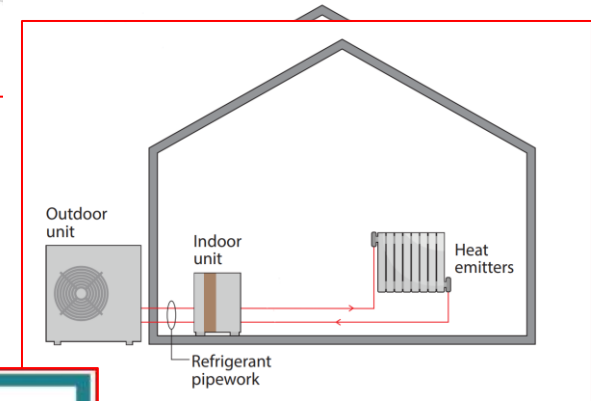
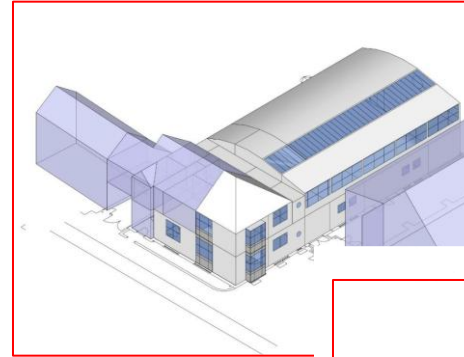
- Different types of group? Storage?
 - Other health related activities?
 - Serving the community as new needs emerge?
 - Business meeting space? Music practice space?
 - Other income generating activities?
 - Improve accessibility and audibility?
- +++ and many others....

Energy efficiency findings

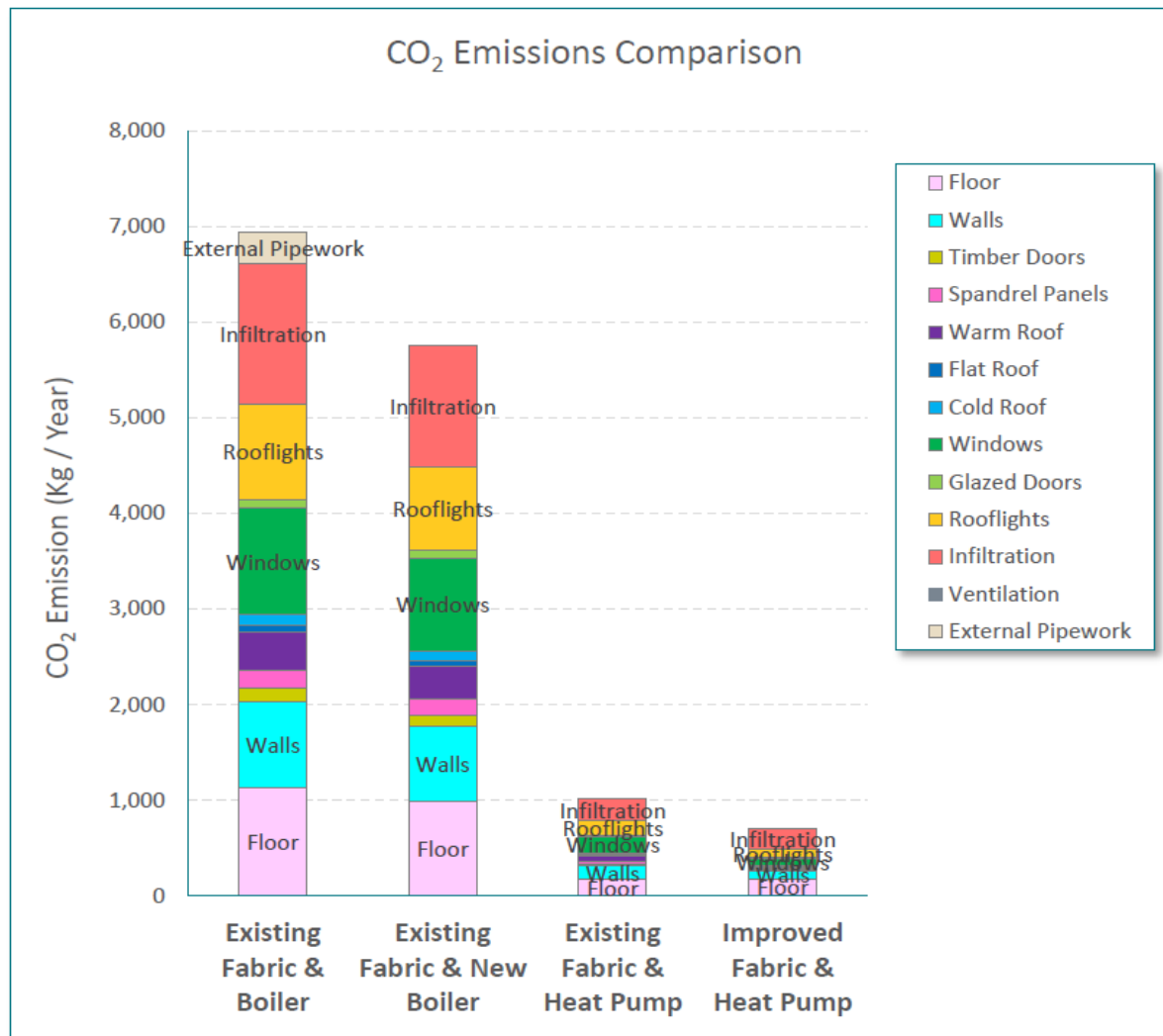
- **Good news! The building is fairly well insulated now!**
- Appears practical to replace gas boiler with heat pumps.
Site at the south east corner of the building
- Small financial gains from further insulation but high upfront cost.
- Still considering different types of Heat Pumps for most practical and comfortable solution.
- New heating cost over £90,000.
- Full insulation cost up to £200,000 but can pick and choose which elements to implement.

Heating and lighting

- Heat loss from the building modelled – just over 20kW.
- Air-to-water heat pump for rooms with radiators.
- Air-to-water heat pump (for the main hall's underfloor heating), and/or air-to-air.
- Main hall's lights to be replaced.



Environmental benefit of heat pumps



Next steps on heating and lighting

- Short-list the preferred work packages, including those spanning both Energy and Refresh – e.g. new doors and windows, insulation works.
- Using the knowledge we now have, consider whether solar panels should be added to the scope.
- Consider impact of options on users and neighbours – e.g. noise inside and out.
- Consult with users, neighbours, the City Council's Planners.
- Decide on technical solutions and draw up detailed specifications.
- Seek the necessary consents.

Katharine Crouch



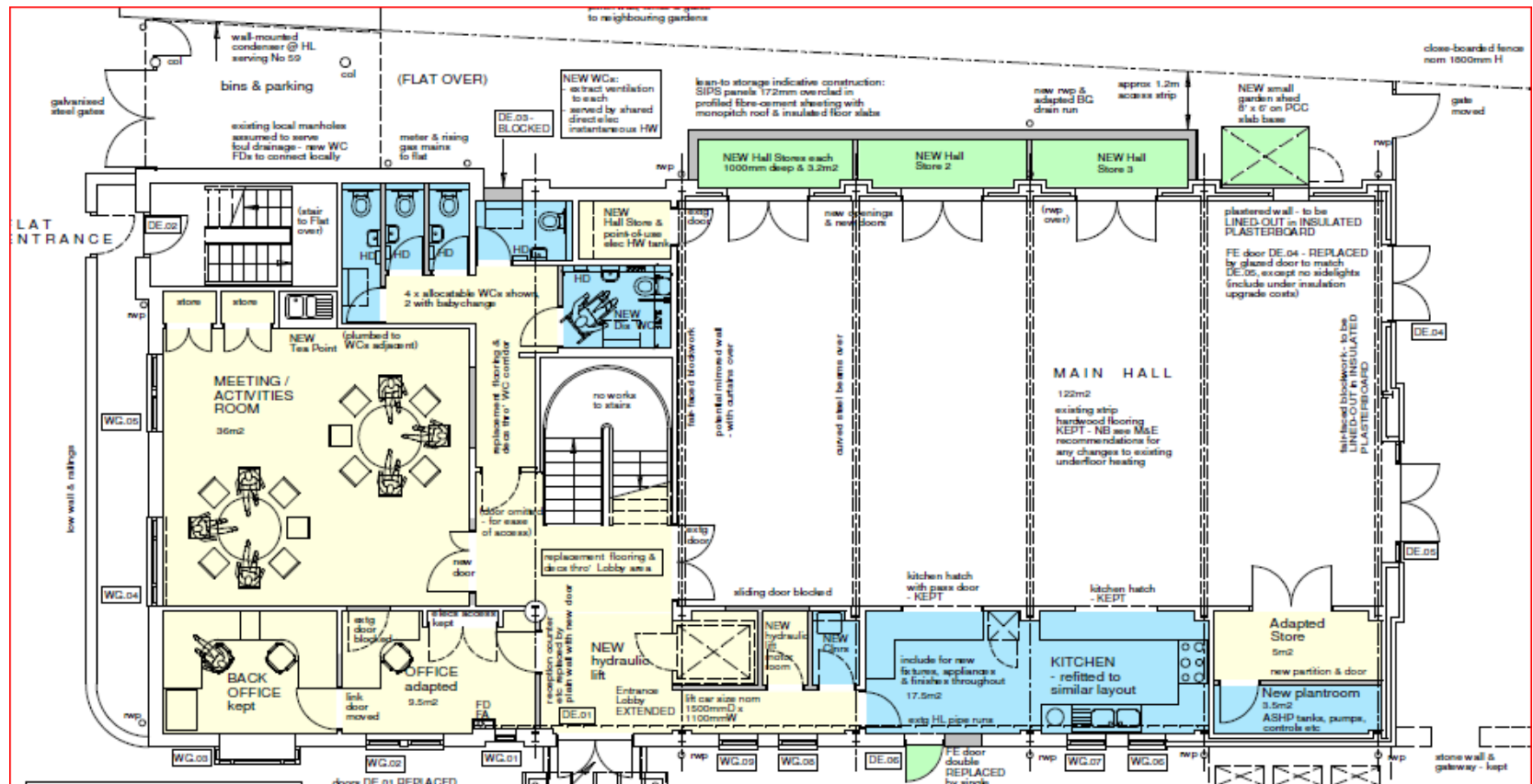
Users of the Parish Centre



Steve Wolstenholme



Possible Changes - Ground Floor

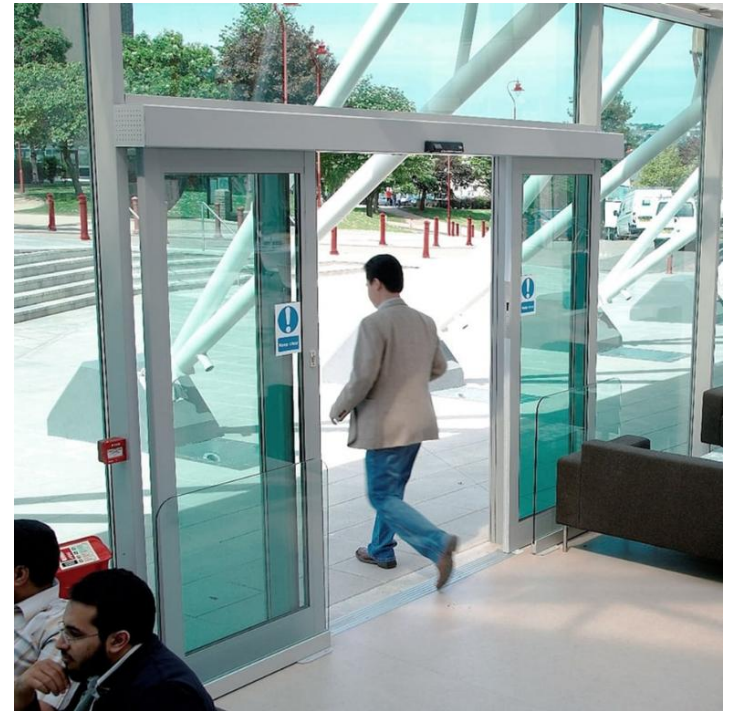


Possible changes - main entrance

Replacement glazed aluminium powered automatic doors –
from recent SWA project at Swallowfield Parish Hall



Glazed aluminium powered automatic doors –
typical manufacturers illustration



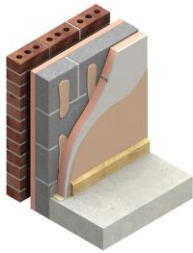
Possible changes - Main hall



Gyptone Quattro 41 is a gypsum board that lets you create stunning flat and curved surfaces with no visible joints. 12mm square perforations and an acoustic fleece backing absorb noise and make sounds like speech much clearer.



Insulated acoustic lining added to curved metal ceilings



Insulating plasterboard added to existing painted blockwork



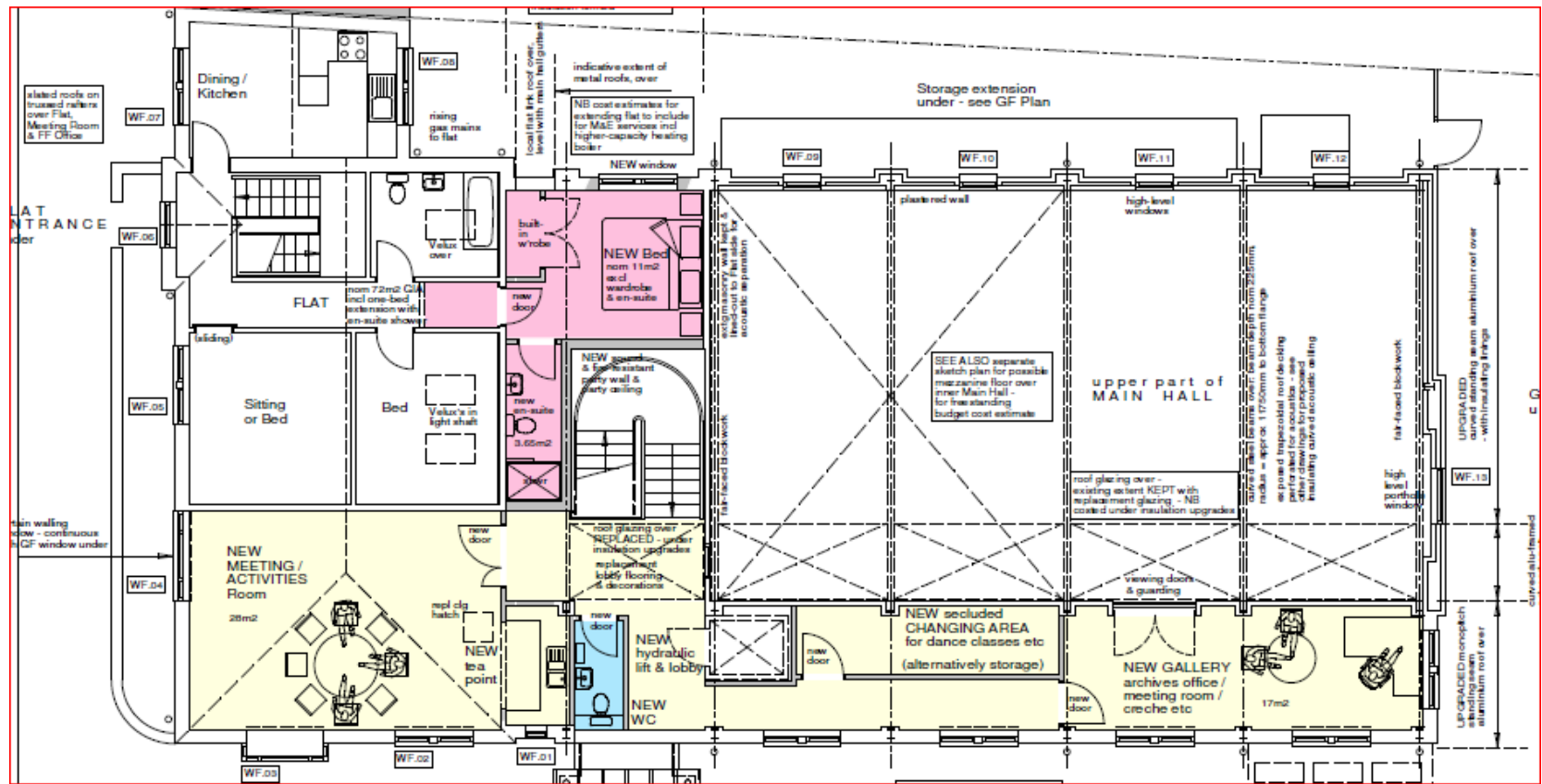
Solid timber escape door replaced by glazed door



Possible wall-mounted heating & cooling units



Possible Changes - First Floor



Choices and affordability

- We have talked to users about changes they would like to see.
- We have identified solutions and costs for a range of improvements.
- Consultation now on what 'packages' of works would be welcome, and affordable.



The Origin Slimline Window (OW-70)

Beautiful, elegant and simplistic, the Origin Slimline Window is designed for spaces where maximising glass and light is essential.

Built from a high-grade aluminium with an impressive 65mm frame, the Origin Slimline Window is as strong as it is sleek. Its ultra-slim sightlines will not only deliver aesthetically, but its innate strength will ensure your home is kept secure.



*Decisions
needed e.g....
'What should
we do about
the ageing
windows?'*

What we need now

- Your thoughts and questions based on what you have heard.
- Where do you see the priorities?
- Is there an element which stands out for you?
- Thoughts/experience about our ability to raise the funds?
- Any other thoughts or questions.

The aim is to make the right decisions



Please stay to ask questions and make comments